

HCPC Education Seminar 2013-14

Welcome

HCPC Education Seminar 2013-14

Introducing the new HCPC standard of education and training

Session one

HCPC's processes

Multi-
professional
regulatory model

Flexible, non-
prescriptive
standards

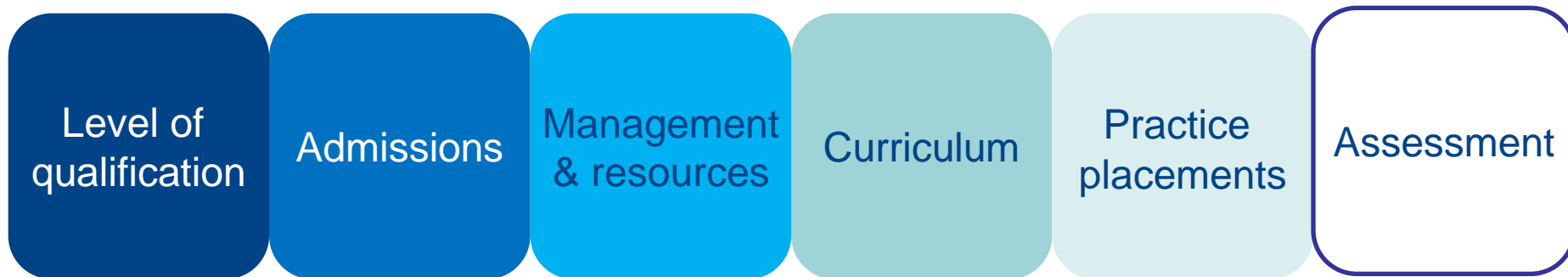
Decision making
through
profession
specific input

Working
alongside
professional
bodies

Open-ended
approval

Standards of education and training (SETs)

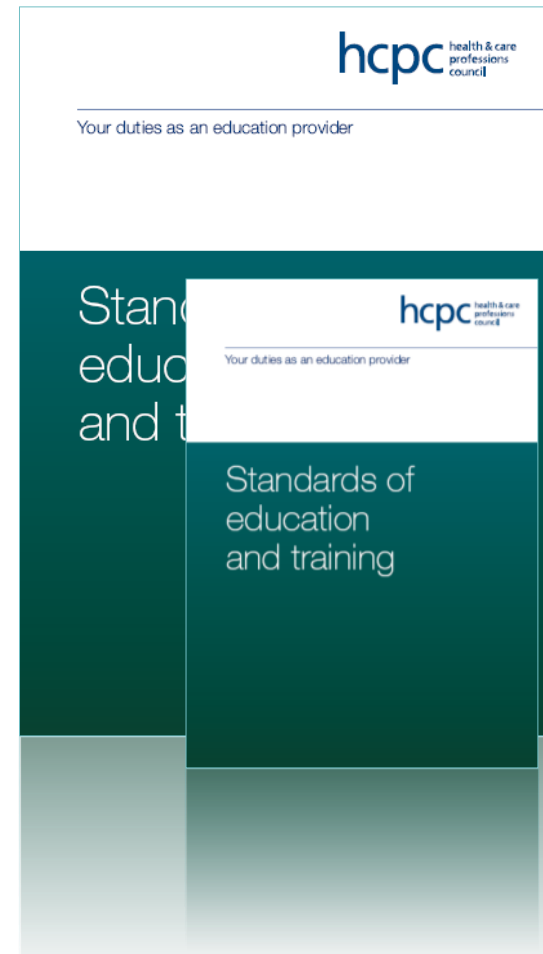
- Assess education and training programmes
- Threshold level
- Generic
- Currently 57 standards across 6 areas:



The new standard of education and training

SET 3.17

Service users and carers must be involved in the programme.



Why a new standard?

- Acknowledges the important contribution of service user and carer involvement in public protection
- Research (available on [HCPC website](#))
- A more consistent approach across the UK
- [Consultation](#) – 88 per cent agreed a new standard should be introduced

What does the new standard mean?

- Those who use or are affected by services

'Service user'



- Someone who has, or currently looks after family or friends in need of support

'Carer'



- Considered and justified the groups you have identified as appropriate and relevant?

HCPC guidance

hcpc

What involvement is the HCPC looking for? Examples

Selection

Programme
planning

Teaching
activities

Learning
activities

Monitoring

Assessment

Developing
materials

Conferences

Quality
assurance

Feedback

Evaluation

Developing
teaching
approaches

Learning

Selection

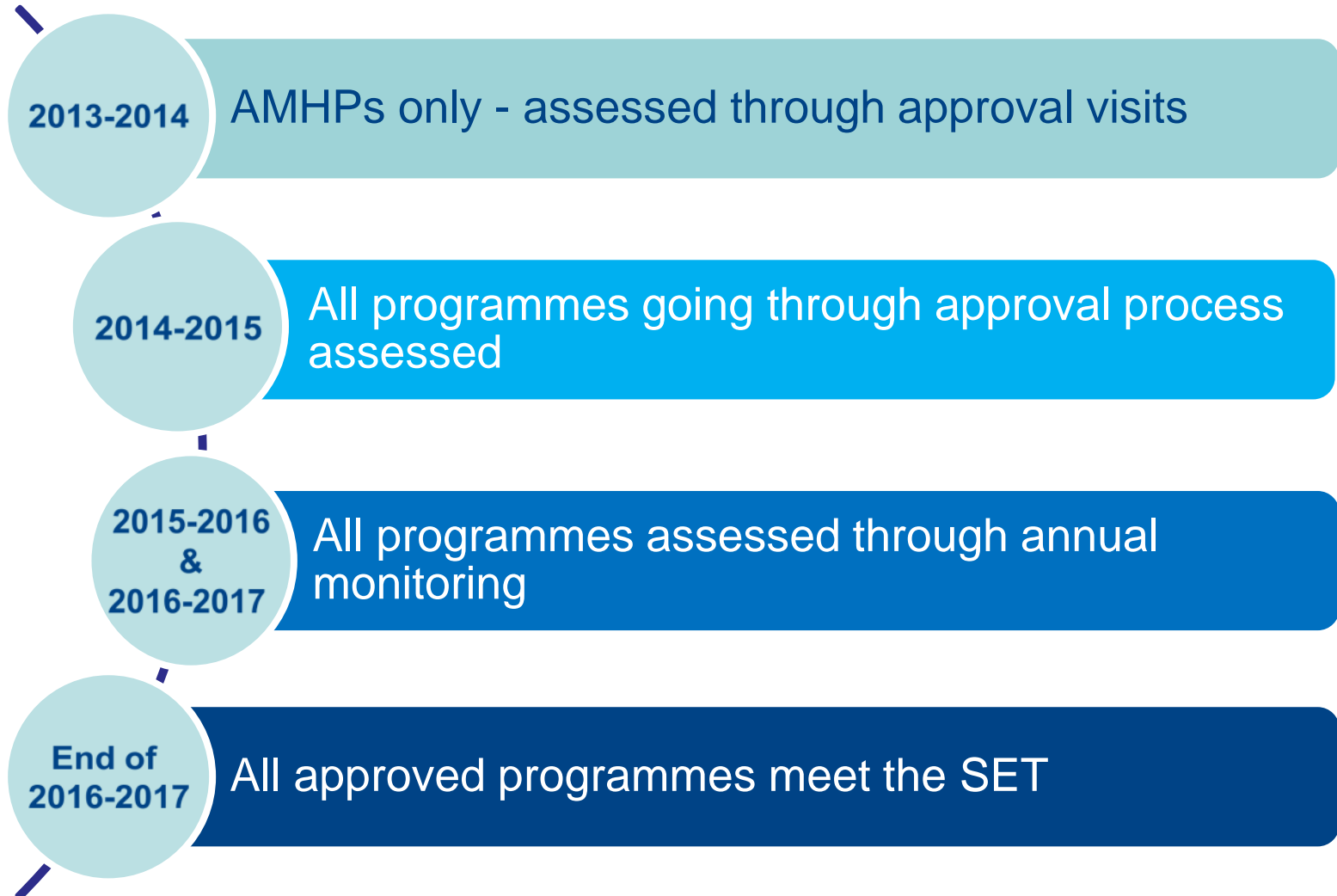
Conferences

Monitoring

What evidence can be presented?

- How involvement is planned, monitored and evaluated
- Policies about how SU and Cs are prepared for roles
- Support given
- Analysis of feedback
- Examples as to how involvement has contributed to the programme

Which processes will assess the new SET?



Implementation – it's up to you



Guidance from other sources

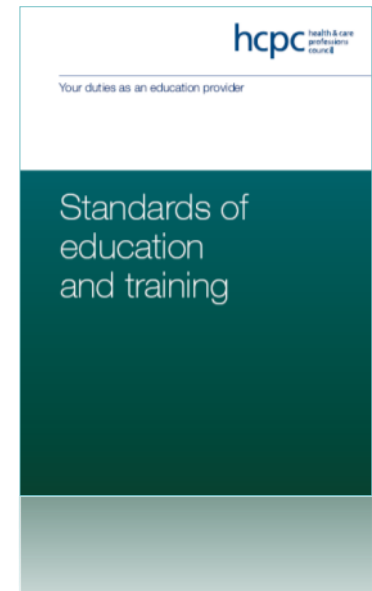
- Professional bodies
- [Skills for Health](#)
- [Skills for Care](#)
- [Higher Education Academy](#)
- Social Care Institute of Excellence [guide to service user and carer involvement in social work education](#)

For engaging with service users and carers:

[Shaping Our Lives](#), [The Patients Association](#), [The National Development Team for Inclusion](#), [National Allied Health Professions Patients' Forum](#)

Key points to remember

- HCPC are introducing a new standard of education and training from 2014 – 2015
- Use the SET guidance
- Justify your service users / carers and the involvement
- Remember the SET will be assessed in context of programme and profession
- Use guidance available from other sources



HCPC Education Seminar 2013-14

The HCPC's expectations of the new standard of education and training

Session two

Who are your service users and carers?



Who are your service users and carers?

1

- Take a character card from the pack

2

- Is this a service user or carer for your allocated profession?

3

- Create a pile for yes and a pile for no and continue with each of the cards

4

- Once completed, note the number of cards in each pile

5

- Ask the facilitator for a new profession and repeat



Who are your service users and carers?

- Anyone can be a service user or carer
- The HCPC don't determine who they are, you do
- Look for an evidence base for your decision
- The decision making process is the evidence HCPC require to demonstrate how the SET is met
- The type of service users and carers will have an impact on how they will be involved



Refreshment break

15 minutes

HCPC Education Seminar 2013-14

How education and training programmes can implement the new standard

Session three

How can service users and carers be involved in programmes?



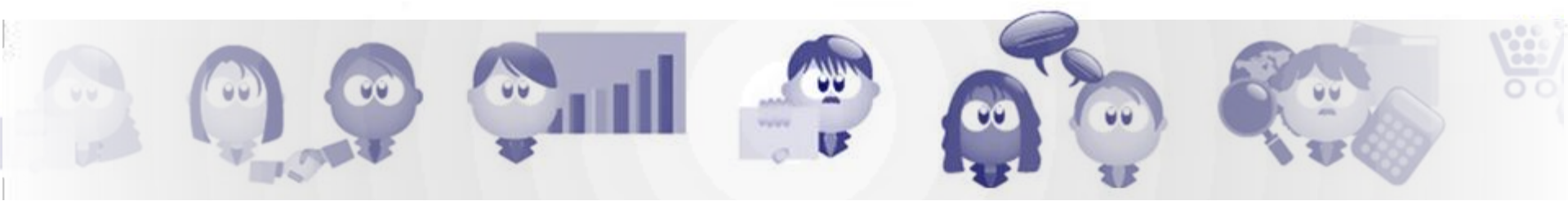
How can service users and carers be involved in programmes?

For each scenario, think about the following questions:

1. Does this meet the new standard?
2. What are the benefits with this form of service user and carer involvement?
3. What are the potential barriers or issues with this type of involvement?
How could you overcome these?

How can service users and carers be involved in programmes?

- However is most appropriate for them and the programme
- The HCPC don't determine how this is done, you do
- Look for an evidence base for your decision
- However you utilise the service users and carers may determine who they are



HCPC Education Seminar 2013-14

Re-cap of the day and open question and answer session

Re-cap of the day

- HCPC are introducing a new standard of education and training
- It will be introduced over a three year period
- It is flexible enough to be met by each programme from every profession
- The burden of evidence falls on the decision making process to determine who service users and carers are and how they should be involved in education and training programmes

Open Q&A

HCPC Education Seminar 2013-14

Please provide us with your
feedback at:

<https://www.surveymonkey.com/s/DGFNRHN>

HCPC Education Seminar 2013-14

Thank you for coming



www.facebook.com/hcpcuk



www.twitter.com/The_HCPC



www.linkedin.com



RSS feeds www.hcpc-uk.org



Email: education@hcpc-uk.org



Tel: 020 7840 9812



Fax: 020 7820 9684



Web: www.hcpc-uk.org